



Cebl - a collaboration by Hitch Mylius and Eleanor Pritchard.  
 The Cebl seating collection, re-imagined by Eleanor Pritchard, is an exclusive edition of the hm58 range designed for Hitch Mylius by Matthias Demacker.

The collection is comprised of three metal-framed pieces: a chair, an arm chair, and a tall stool. Each frame is available in a choice of three bespoke powder-coated colours with upholstery in selected fabrics from the *Aerial* fabric collection by Eleanor Pritchard.

The collection is suitable for contract and domestic use.

+44 (0)20 8692 2544  
 info@eleanorpritchard.com  
 www.eleanorpritchard.com

Studio 300  
 18-22 Creekside  
 London SE8 3DZ. UK

**Cebl arm chair**



**Dimensions**  
 W 58cm  
 D 61cm  
 H 81cm (back)  
 H 47cm (seat)

**Cebl chair**



**Dimensions**  
 W 58cm  
 D 61cm  
 H 81cm (back)  
 H 47cm (seat)

**Cebl tall stool**

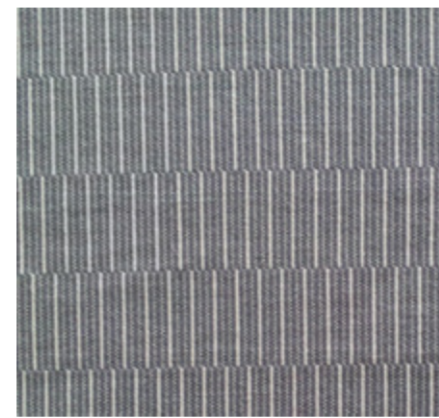


**Dimensions**  
 W 47cm  
 D 49cm  
 H 90cm (back)  
 H 77cm (seat)

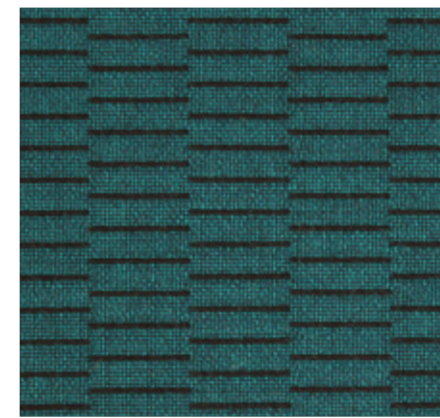
**Cadmium Yellow Frame**



**Heathfield** face A (rotate 90 degrees for tall stool)  
 Smoke grey with white accent



**Caldbeck** face A  
 Petrol green with black accent



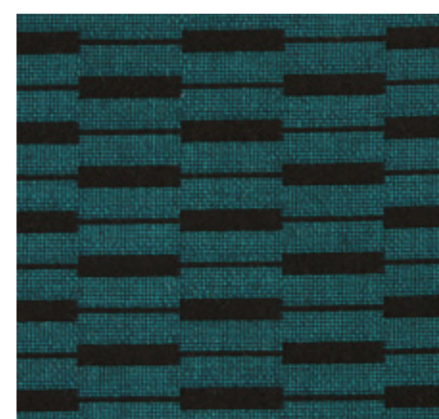
**Wrekin** face B  
 White with blue-black accent



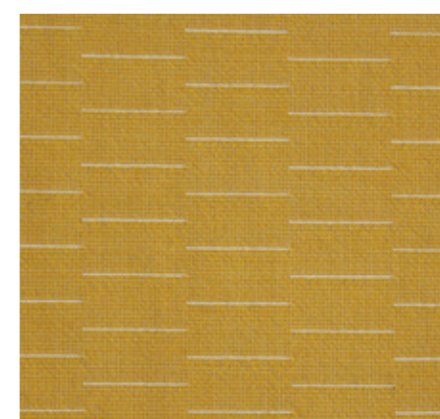
**Clay Frame**



**Meldrum** face A  
 Petrol green with black accent



**Ashkirk** face A  
 Straw yellow with white accent



**Rowridge** face A (rotate 90 degrees for tall stool)  
 Blue-black with black + white marl accent



**Cobalt Green Frame**



**Belmont** face B (rotate 90 degrees for tall stool)  
 Hot orange with black + white



**Mendip** face A  
 Smoke grey fleck with white accent



**Chillerton** face A (rotate 90 degrees for tall stool)  
 Straw yellow with white accent

